



MONTHLY MEMBERSHIP PROGRESS REPORT

Results as of: 9/30/2016

Multiple District 31

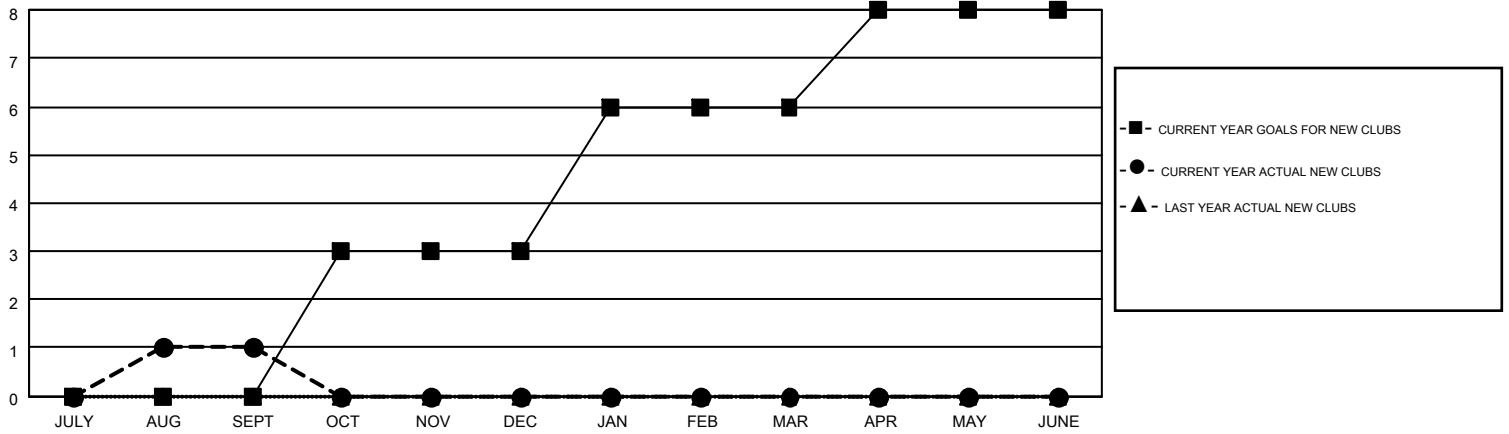
LOCATION: NORTH CAROLINA

GMT: HARVEY WHITLEY

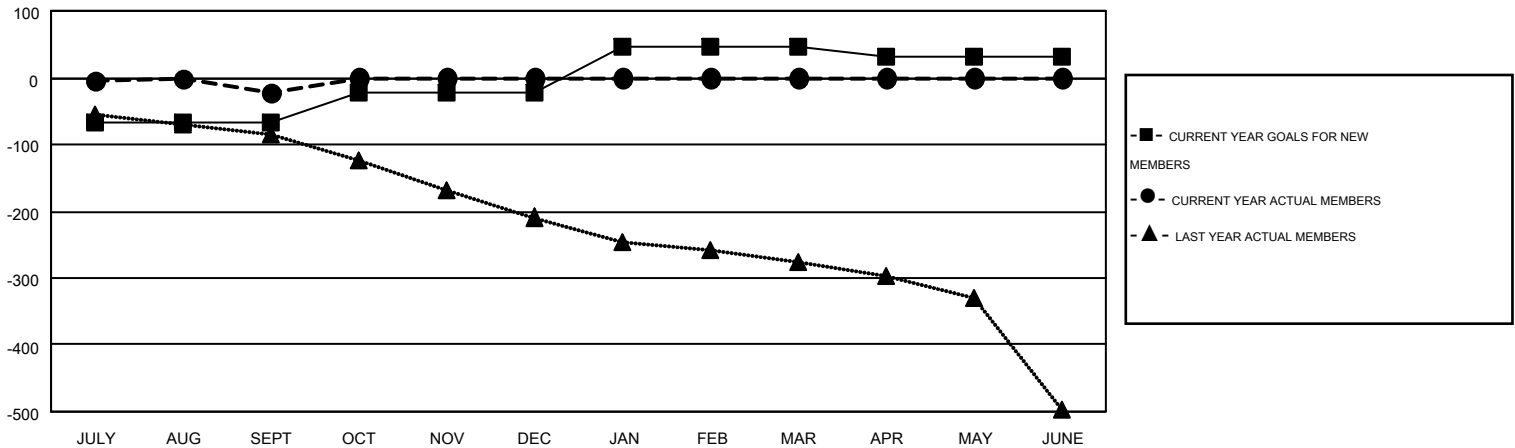
GMT CA 1

Clubs					Members				
RESULTS FOR 2016-2017					RESULTS FOR 2016-2017				
QUARTER	NEW CLUB GOAL	NEW CLUBS	DROPPED CLUBS	NET GAIN/LOSS	QUARTER	NEW MEMBER GOAL	CHARTER AND NEW MEMBERS ADDED	DROPPED MEMBERS	NET GAIN/LOSS
JULY/AUG/SEPT	0	1	0	1	JULY/AUG/SEPT	-66	211	233	-22
OCT/NOV/DEC	3	0	0	0	OCT/NOV/DEC	43	0	0	0
JAN/FEB/MAR	3	0	0	0	JAN/FEB/MAR	68	0	0	0
APR/MAY/JUNE	2	0	0	0	APR/MAY/JUNE	-13	0	0	0

GOALS AND ACTUAL NEW CLUBS CUMULATIVE



GOALS AND ACTUAL MEMBERS CUMULATIVE



DROPPED CLUBS: 0	75 CLUBS OF 304 ADDED 1 OR MORE NEW MEMBERS	<u>GENDER DISTRIBUTION</u>	
		MALE	4,478 (70.85%)
<u>DROPPED MEMBERS</u>		FEMALE	1,842 (29.15%)
DECEASED	33	<u>FAMILY UNIT MEMBERS</u> 1,321	
CLUB CANCELLED	0	<u>HEAD OF HOUSEHOLD</u> 647	
OTHER	198	<u>NON-HEAD OF HOUSEHOLD</u> 674	
TOTAL	231		

[CLICK HERE FOR HEALTH ASSESSMENT DATA](#)